

## Hot air blower COMPACT max. 6'100W

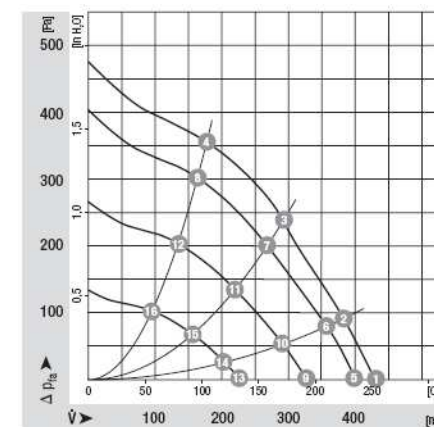


- Function:** Hot air blowers for industrial use  
 - small dimensions great power
- Configuration:** Standard: temperature control with potentiometer (0 - 9)  
 - alternatively with external potentiometer (cable length 5 meters) or  
 - external control by controller or PLC (cable length 5 meters)  
 The unit is equipped with a reliable heating element, the integrated device protection turns off the device when tripped and restore itself back after cooling. No reset is required.
- Features:** Default: Variable air volume control with potentiometer (0 - 9)  
 - alternatively with external potentiometer (cable length 5 meters) or  
 - external control by controller or PLC (cable length 5 meters)  
 Custom design with internal thermocouple (cable length 1 or 5 meters)  
 - For devices with electronics maximum air temperature 50 ° C  
 - The unit is available without electronics  
 - For devices without electronics maximum air temperature 80 ° C  
 - Special design with internal temperature control  
 - Evaluating the fan speed via "open collector"
- Power:** 2,3 KW - 6,1 KW  
**Voltage:** 230 / 400VAC (2Ph)

### Technical data

Item number	5102586	5102602	5102581	5102605	5102599	
<b>Voltage</b>	VAC	230		400 (2Ph + N)		
<b>Frequency</b>	Hz	50 / 60				
<b>Power</b>	kW	2,3	3,1	3,7	4,7	6,1
<b>Current</b>	A	10,0	13,5	16	11,8	15,3
<b>Max. temperaturer</b>	°C	650	800	650		
<b>Min. air quantity</b>	l/min	400	350	400		550
<b>Max. air quantity at 20°C</b>	l/min	940	800	930	960	950
<b>Max. Temperature with full air quantity</b>	°C	260	520	440	480	630
<b>Static pressure</b>	Pa	450				
<b>Sound pressure level (LpA)</b>	db	73 (at 1m distance)				
<b>Intake opening</b>	Ø mm	102,5				
<b>Air outlet</b>	Ø mm	55				
<b>Heating element tube</b>	Ø mm	62 / 74				
<b>Dimensions (L x W x H)</b>	mm	322x138x180	362x138x180	322x138x180	362x138x180	
<b>Weight incl. Cable</b>	kg	2,8	3,1	2,8	3,1	
<b>Conformity mark</b>						
<b>Protection class II</b>		<input type="checkbox"/>				

### Power curve



Hot air blower COMPACT max. 6'100W

1. Power cable  
Connection diagram for 400VAC version:  
- - L1 = black  
- - L2 = brown  
- - N = blue
2. Heating ON- OFF (only if the fan switch (3) is ON)
3. Fan ON – OFF
4. Handle, pushed laterally (fixed with two screws)
5. Potentiometer for speed / air volume (cable gland with external control)  
- Cable gland for control line for external control (Option)
6. Heating control potentiometer (screw with external control)  
- Cable gland for control line for external control (Option)
7. Label (rear panel)
8. Heater tube
9. Intake
10. Temperature controller (optional)  
- Cable gland for signal line for pulse output (option)
11. 6 threaded inserts M5 for mounting the unit during installation (dimensions on the device base)











<p><u>Control cable for external temperature control</u></p> <ul style="list-style-type: none"> <li>- digital signal (PWM 10-24 VDC, 0.5 Hz)</li> </ul> <p><u>Control cable for external speed control:</u></p> <ul style="list-style-type: none"> <li>- digital rpm = 15VDC, I / max = 10mA;</li> <li>- PWM/1-10KHz/50-100% (50% = minimum amount of air)</li> <li>- analog 5-10VDC, (5VDC = minimum amount of air)</li> </ul>	<p>+ = brown - = white</p> <p>+ = green - = white</p>	<p><u>Control cable with external potentiometer for temperature- or speed control:</u></p> <p>Red / brown Black / white Blue /green</p>
<p><b>WARNING.</b> "Must be guaranteed at analog or digital control of the speed that the minimum amount of air-flow is brought forward when the heat is on!"</p>		
<p><u>Signal line for external speed display:</u></p> <ul style="list-style-type: none"> <li>- 1 pulse per revolution</li> <li>- Open collector output</li> </ul>	<p>+ = brown - = white</p>	<p>Compensation line with internal thermocouple type K':</p> <p>+ = green - = white</p>

**Hot air blower COMPACT max. 6'100W****Available modifications:**

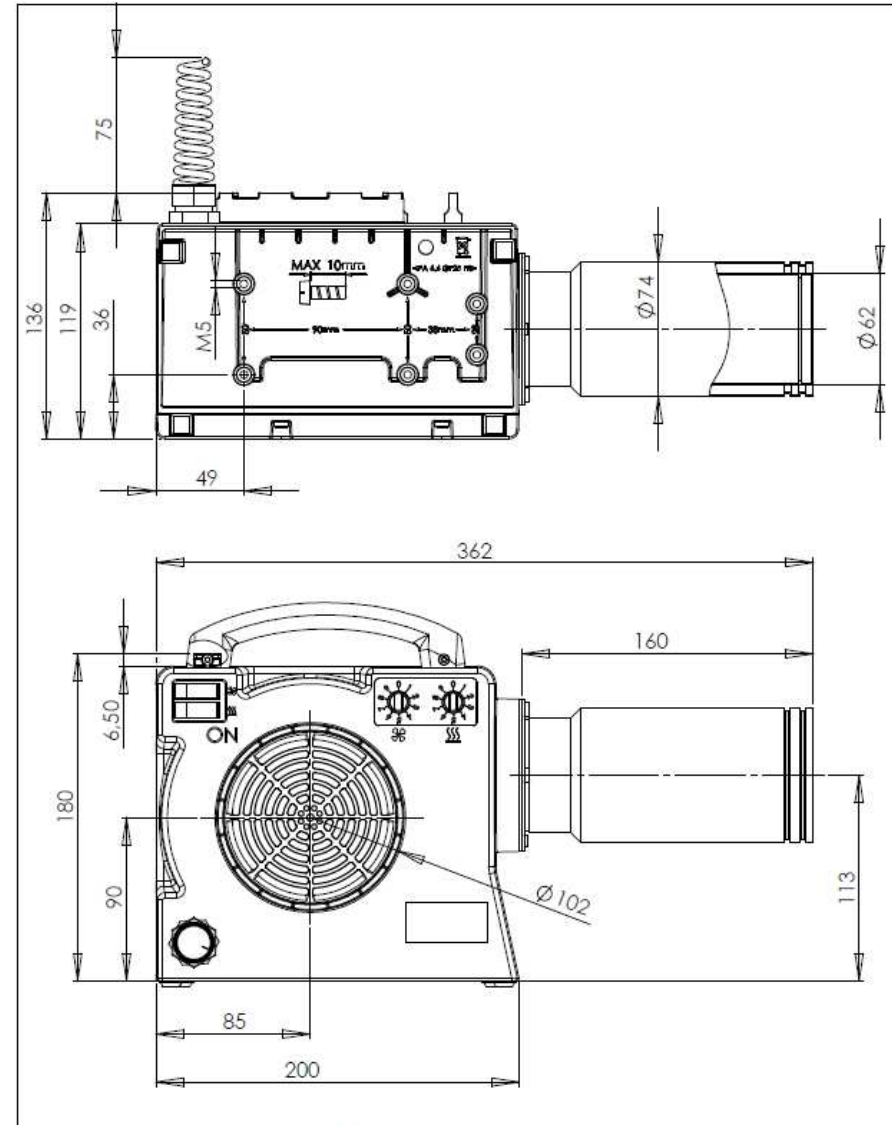
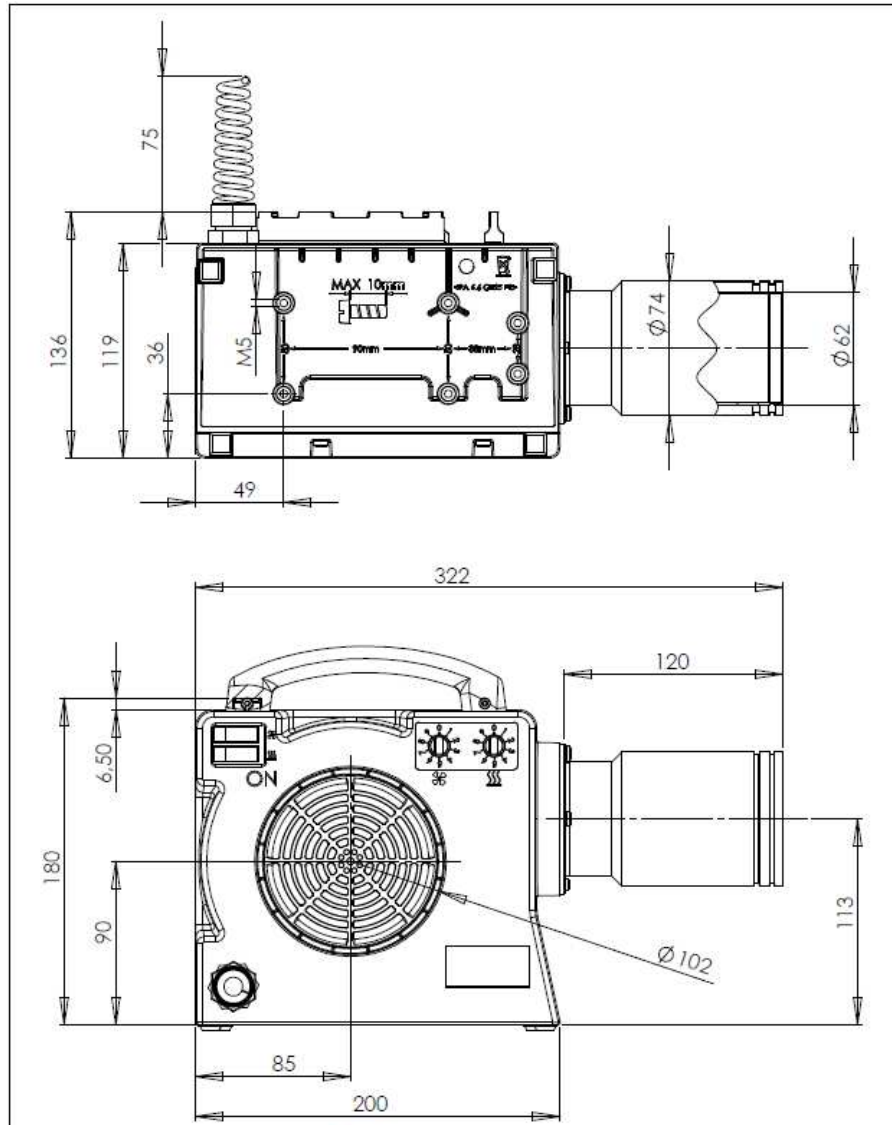
(By the following modifications, for example, an internal PID control is possible)

- S01** - external heating control via PWM signal (12-24VDC, maximum cycle time 1Hz) incl. 5 meter 2-pole. control line (only necessary for types COMPACT and PN10);
- S02** - external potentiometer for heating incl. 5 meter 3-pole. Control cable and rotary knob (red);
- S04** - external control of fan speed incl. 5m 3-pole. Control line (only for type COMPACT)  
- control signal analogue: 0-10VDC; Control signal digital: PWM 12-24VDC; 1-10kHz; I<sub>max.</sub> 10mA
- S05** - internal PID control of the temperature without visualization for basic units with potentiometer (type 1 basis)
- S06** - internal thermocouple for all three basic versions with 2 meter compensation line;
- S07** - separate connection option for heating and fan with type COMPACT (230VAC);
- S08** - Fixed blower speed for type COMPACT;
- S09** - Built-in digital controller with 2-line display for target and actual temperature and internal thermocouple (only type COMPACT);
- S10** - additional handle, mounted on the back (only type COMPACT);
- S11** - separate connection option for heating and fan; without connection cable (only with type COMPACT 400VAC (230VAC blower / 400VAC heating));
- S12** - Compressed air connection with push-in nipple 8 / 6mm for type S;
- S13** - Connection for hose 6 / 4mm for pressure monitoring in types S and M without electronics;
- S15** - Compressed air connection with push-in nipple 8 / 6mm for type M;
- S16** - M32 cable gland for mains connection cables up to Ø19mm for types L and XL;
- S17** - Power cable made of silicone, firmly soldered for blow-in air temperatures up to 100 ° C for types L and XL without electronics;
- S18** - funnel-shaped outlet opening without anti-kink spiral for mains connection cable (only for type COMPACT without handle);
- S20** - External control of the load relay (SSR) by a PWM signal 12-24VDC for types L and XL without electronics;
- S21** - Evaluation of fan speed with 5 meter control line; Interface OpenCollector - 2 pulses / revolution - max. 10mA for counter with 5000 input pulses / minute (only COMPACT type);
- S23** - Heating element tube without protective tube for all air heaters and COMPACT
- S24** - fixed heating power (only COMPACT type)
- S29** - external potentiometer incl. 5 meter control cable and rotary knob (blue) for blower speed (only type COMPACT)

## Hot air blower COMPACT max. 6'100W

Accessories	Description	Item-No.
	Flange connection	5107246
	Round nozzle Ø 40mm	5107245
	Angled nozzle Ø 62mm; length 120 x 112mm	5107265
	Extension tube Ø 40mm; length = 200mm	5107247
	Tubular nozzle 700 x 550 x 1,7mm	5107253
	Wide slot nozzle 85 x 15mm	5107260
	Wide slot nozzle 150 x 12mm	5107259
	Wide slot nozzle 200 x 9mm	5105977
	Wide slot nozzle 250 x 12mm	5107263
	Wide slot nozzle 300 x 4mm	5107262
	Wide slot nozzle 500 x 4mm	5105991
	Shrinking reflector 50 x 400mm; nozzle laterally mounted	5106177
	Stainless steel filter for COMPACT suction side	5107248

Hot air blower COMPACT max. 6'100W



Maße in mm / allg. Toleranz +/- 1mm  
Dimensions in mm / measurements +/- 1mm

Maßblatt  
Dimension sheet

Typ / Type:  
Compact

Zeichnung / Drawing Nr.:  
08052008V1

Name Router:  
Blatt / Page 1/1

Technische Änderungen vorbehalten / technical changes reserved



Maße in mm / allg. Toleranz +/- 1mm  
Dimensions in mm / measurements +/- 1mm

Maßblatt  
Dimension sheet

Typ / Type:  
Compact L

Zeichnung / Drawing Nr.:  
08052008V1

Name Router:  
Blatt / Page 1/1

Technische Änderungen vorbehalten / technical changes reserved